

# Winter viruses are coming back...

Including stomach viruses and respiratory viruses such as Flu and RSV

## Stay off School or Childcare

### If your child:

- Feels too unwell to attend.
- Has a high temperature/fever (above 38°C).
- Has vomiting or diarrhoea.
- Feels unwell and has a rash.

**Speak to your GP if you are worried** about your child's health.

**Your local pharmacist can advise** on minor ailments.

## Ready to go back

### If your child:

- Followed advice of a healthcare professional, if given.
- No longer has a high temperature/fever.
- Is 48 hours clear of vomiting and/or diarrhoea.

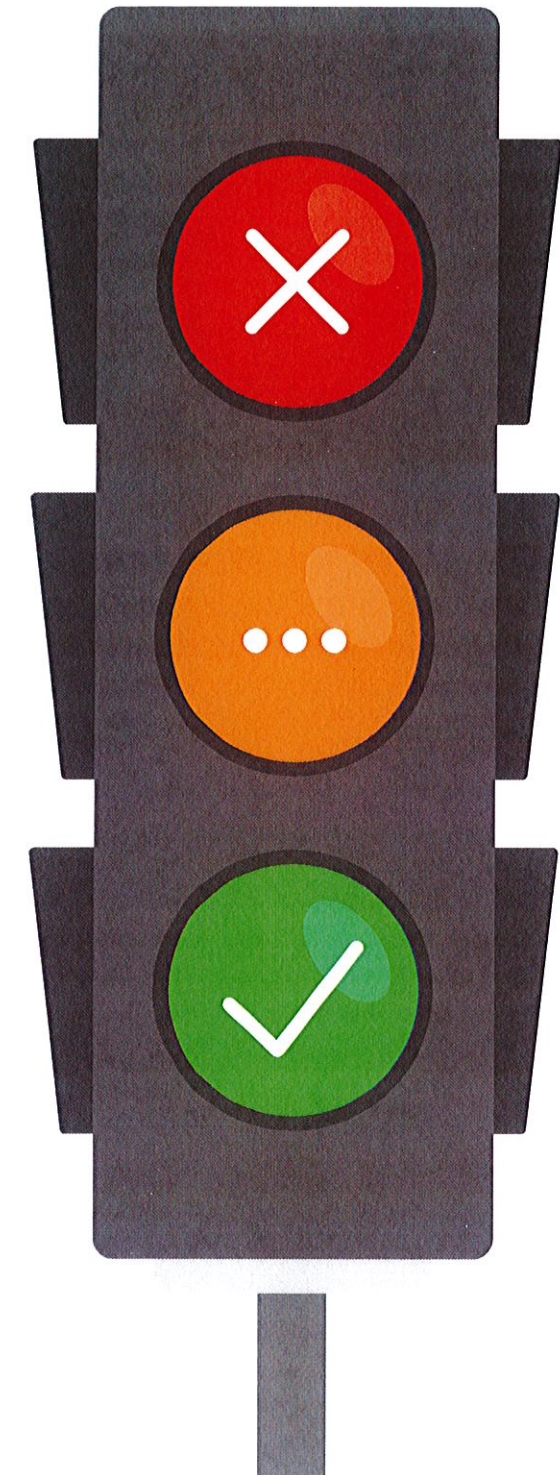
## No need to stay home

### If your child:

- Just has sniffles and mild symptoms (e.g. mild earache, tummy ache, headache, common cold).
- Does not have a high temperature/fever or rash.
- Feels well enough to attend.

## IMPORTANT INFORMATION

- Let the School/Nursery know why your child is off.
- Protect others - **'Catch it, Bin it, Kill it!'**
- Encourage children to catch their coughs, and throw away used tissues.
- Encourage children to wash their hands regularly.
- If unwell, avoid contact with vulnerable people e.g. young babies, the elderly, and people who are immunocompromised.
- **'Call ahead, Stop the Spread'** - ring your GP or Out of Hours Service before attending if your child has a rash and temperature - let them know about the rash.
- Having a flu vaccine will help protect your child from flu.



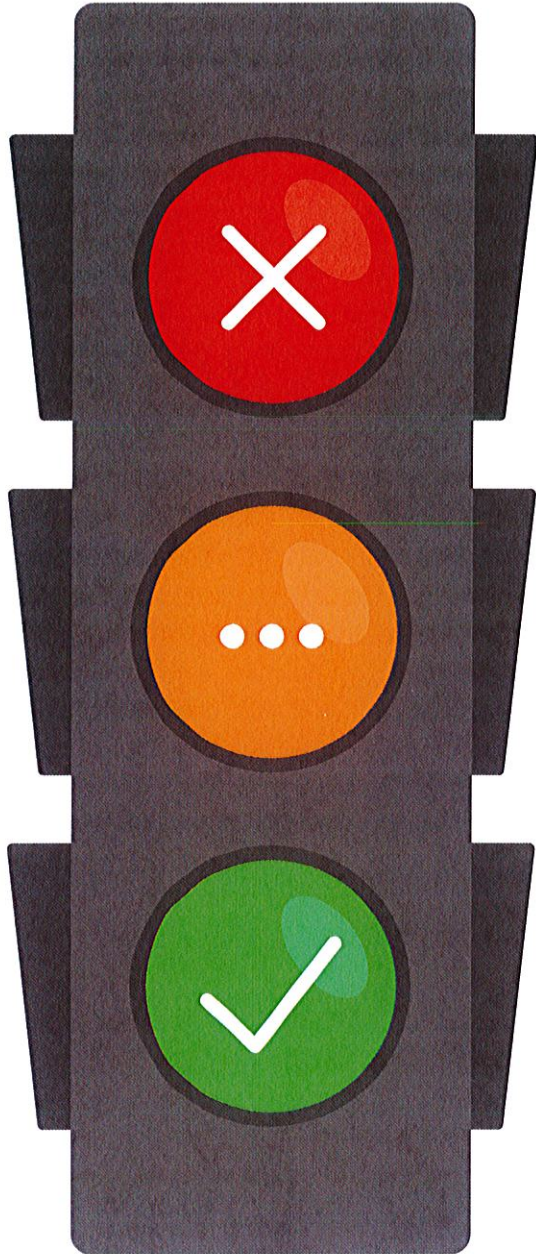
GIG  
CYMRU  
NHS  
WALES

Bwrdd Iechyd Prifysgol  
Cwm Taf Morgannwg  
University Health Board

# Mae firysau'r gaeaf yn dod yn ôl ...



Gan gynnwys firysau stumog a firysau anadlol fel y Ffliw a feirws syncytiol anadlol



## Aros adref o'r ysgol neu o Ofal Plant

### Os yw'ch plentyn:

- Yn teimlo'n rhy sâl i fynychu.
- Mae ganddo dymheredd uchel / twymyn (uwch na 38°C).
- Wedi chwydu neu gyda dolur rhydd.
- Yn teimlo'n sâl ac mae ganddo frech.

**Siaradwch â'ch meddyg teulu os ydych chi'n poeni am iechyd eich plentyn.**

**Gall eich fferylllydd lleol roi cyngor ar fân anhwylderau.**

## Yn barod i fynd yn ôl

### Os yw'ch plentyn:

- Yw eich plentyn wedi dilyn cyngor gan weithiwr gofal iechyd proffesiynol, os caiff ei roi.
- Nad oes ganddo dymheredd uchel/twymyn mwyach.
- Nad yw eich plentyn wedi chwydu neu wedi cael dolur rhydd ers 48 awr.

## Does dim angen aros adref

### Os yw'ch plentyn:

- Mai dim ond snifflau a symptomau ysgafn sydd gan eich plentyn (e.e. clust dost ysgafn, bola tost, pen tost, annwyd cyffredin).
- Nad oes gan eich plentyn dymheredd uchel/twymyn neu frech.
- Yw eich plentyn yn teimlo'n ddigon da i fynychu.

## Gwybodaeth Bwysig

- Rhowch wybod i'r Ysgol/Meithrinfa pam fod eich plentyn bant o'r ysgol.
- Amddiffynnwch eraill - **'Ei Ddal, Ei Daflu, Ei Ddifa!'**
- Anogwch blant i ddal eu peswch a thafllu eu hancesi papur i ffwrdd.
- Anogwch blant i olchi eu dwylo'n rheolaidd.
- Os yn sâl, ceisiwch osgoi cysylltiad â phobl agored i niwed e.e. babanod ifanc, yr henoed, a phobl sydd ag imiwnedd gwan.
- **'Ffoniwch ymlaen llaw, Atal Lledaeniad'** - ffoniwch eich Meddyg Teulu neu'ch Gwasanaeth Tu Allan i Oriau cyn mynychu os oes gan eich plentyn frech neu dymheredd - rhowch wybod iddyn nhw am y frech.
- Bydd cael brechlyn rhag y fflw yn helpu i amddiffyn eich plentyn rhag y fflw.



GIG  
CYMRU  
NHS  
WALES

Bwrdd Iechyd Prifysgol  
Cwm Taf Morgannwg  
University Health Board